

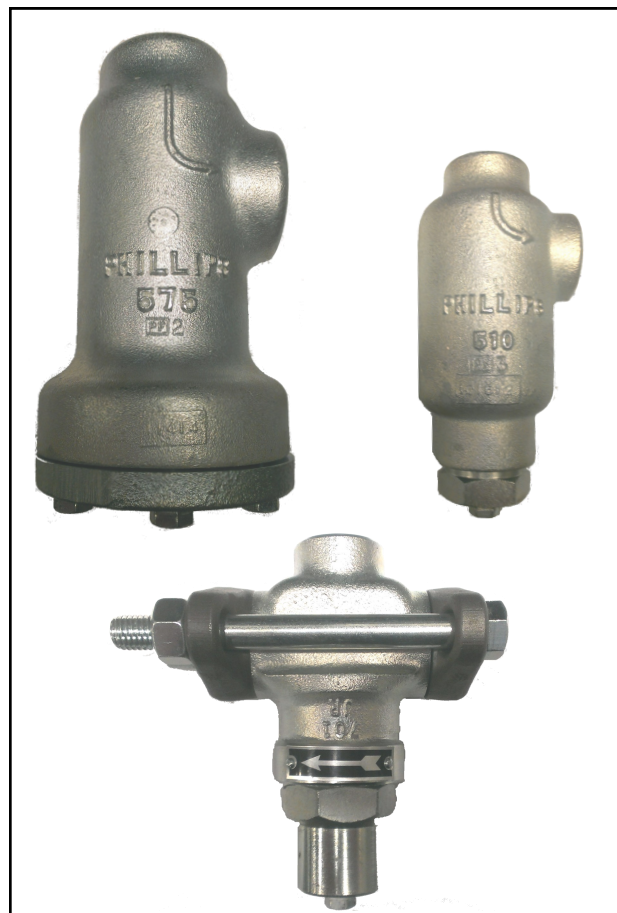
For Ammonia (R717) and Halocarbon Refrigerants

Features

- **Pressure Rating:**
300 psig (-20°F to +240°F)
20 bar g (-29°C to +116°C)
- **Zinc Plated Iron Bodies (Globe and Angle Bodies)**
- **Threaded and Flanged Connections**
- **Stainless Steel Mesh Screen, Reinforces with Perforated Stainless Steel Cylinder**

Description

Phillips® offers three styles of compact filters to protect a variety of refrigeration equipment from particulate matter. The 510 and 575 styles are angle-type, typically used with Phillips' low-side float valves. These filters have FPT connections. The S701JRP is a flanged globe-style filter, typically used with small piston-type valves. All of these filters feature screen assemblies that are reinforced with perforated stainless steel sleeves.



575, 510, and S701JRP Filters

Compact Filters Table

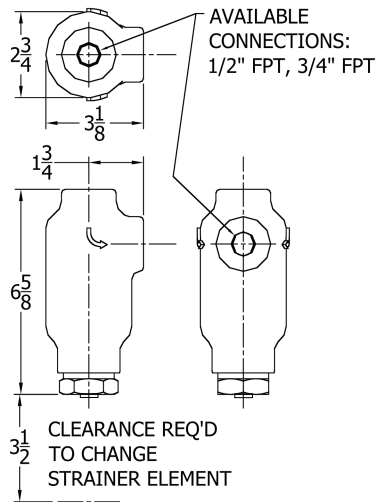
Model	Body Style	Connection Sizes Available (in.)	Body Material	Filter Area	Mesh Size*	Microns (μ)*	Weight (lbs.)
510	Angle, Threaded	1/2 & 3/4 FPT	Zinc-Plated Cast Iron	11 in ² (71 cm ²)	200 (0.003" particle)	74μ	5
575	Angle, Threaded	3/4, 1 & 1-1/4 FPT	Zinc-Plated Cast Iron	29 in ² (187 cm ²)	50 (0.012" particle)	297μ	20
S701JRP	Globe, Flanged	1/2, 3/4 & 1 FPT 1/2, 3/4 & 1 Socket Weld 5/8, 7/8, 1-1/8 & 1-3/8 ODC	Zinc-Plated Ductile Iron	14 in ² (90 cm ²)	50 (0.012" particle)	297μ	6

*Mesh is the number of threads per inch. μ (microns) is the distance between two threads (1μ = 1/1000 mm)

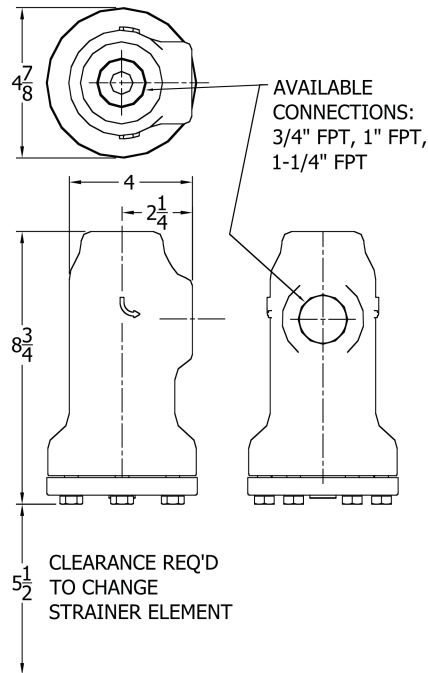


Filter Dimensions Diagram

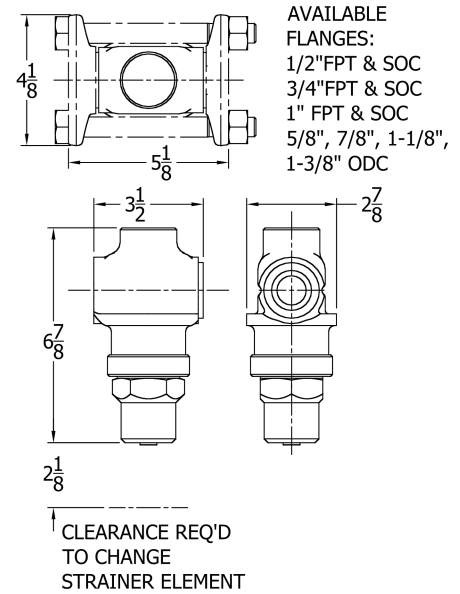
510 FILTER



575 FILTER



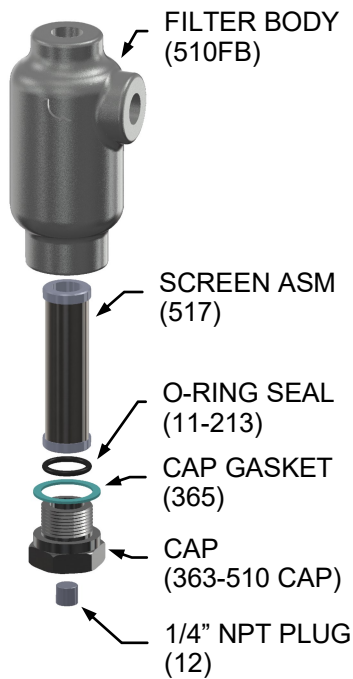
S701JRP FILTER



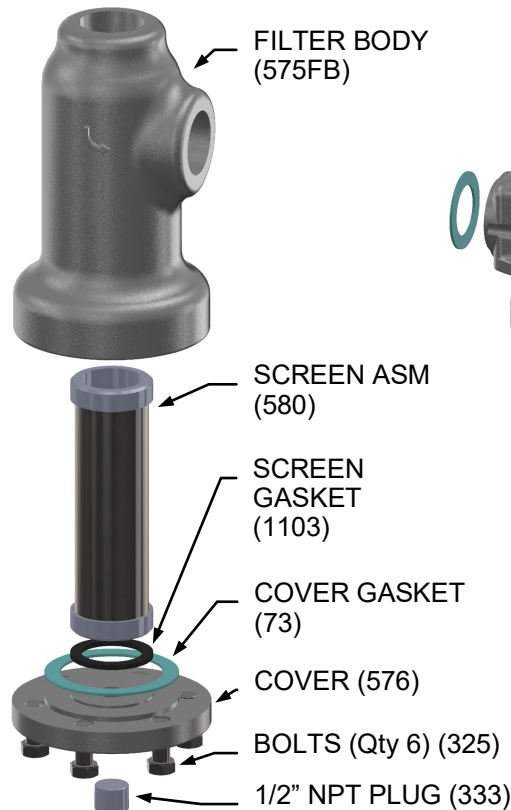
ALL DIMENSIONS ARE IN INCHES

Spare Parts and Assembly Diagram

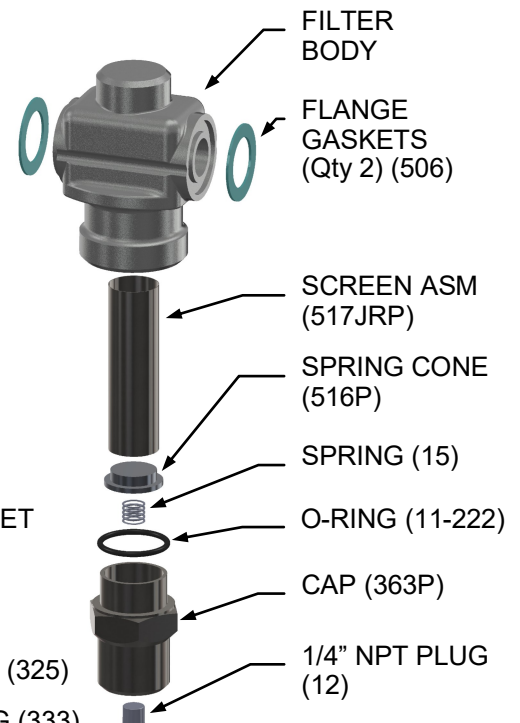
510 FILTER ASSEMBLY



575 FILTER ASSEMBLY



S701JRP FILTER ASSEMBLY



H. A. Phillips & Co.

770 Enterprise Avenue
DeKalb, IL 60115 U.S.A.
Phone: (630) 377-0050
Fax: (630) 377-2706

