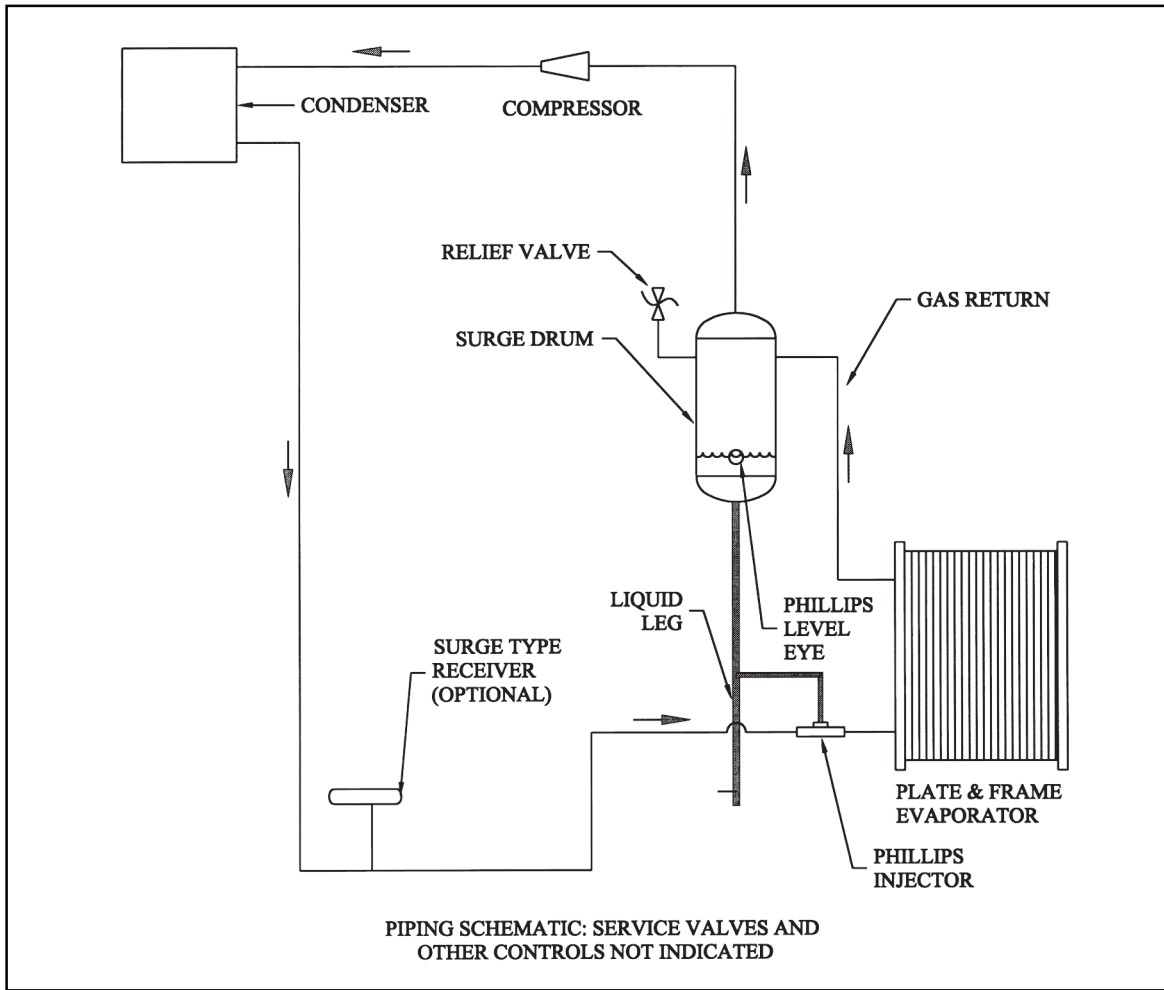


Injector and Surge Drum Sizing Fixed Charge System R717 Plate & Frame Typical Application



PIPING SCHEMATIC: SERVICE VALVES AND OTHER CONTROLS NOT INDICATED
NOTE: LEVEL CONTROL MAY BE AN INDIVIDUAL VALVE OR A PILOT OPERATED VALVE COMBINATION.

FIXED CHARGE APPLICATION

R717 (TONS)	PHILLIPS INJECTOR	NOM INJECT. SIZE	VERTICAL SURGE DRUM SUCTION TEMP. (°F)			LIQ. LEG (IN.)	GAS RETURN °F SUCTION (IN.)		
			+32	+10	-10		+32	+10	-10
25	2075WCB	3/4"	10" X 42"	12" X 42"	12" X 42"	2-1/2	3	3	3-1/2
50	2100WCB	1"	14" X 42"	16" X 42"	18" X 42"	3	4	4	5
75	2125WA	1-1/4"	18" X 36"	20" X 40"	20" X 40"	3-1/2	5	5	6
125	2150WA	1-1/2"	24" X 48"	24" X 48"	30" X 42"	4	5	6	6
200	2200WA	2"	30" X 54"	30" X 54"	36" X 54"	5	6	8	8
300	2250WA	2-1/2"	36" X 60"	36" X 60"	42" X 54"	6	8	8	10

Note: This data represents typical application with warm, high pressure liquid. Consult factory for specific application and halocarbon applications. Multiple injectors can be used for larger capacities.

INJECTOR SIZES & DIMENSIONS



INJECTOR MODEL	A	B	C	D	E	F		SHIPPING WT. (LBS.)
	(IN.)	(IN.)	(IN.)	(IN.)	(IN.)	(IN.)	ODC (IN.)	
2075WCB	2.13	3.63	6.38	0.99	3/4 (FPT)	3/8, 1/2	5/8	2.15
2100WCB	2.69	4.00	7.25	1.25	1 (FPT)	3/8, 1/2	5/8	3.25
2100WCBA	2.69	4.00	7.25	1.25	1 (MPT)	3/8, 1/2	5/8	3.00
2125WA	1.88	3.25	5.87	1.25	1-1/4	1/2	5/8	4.15
2150WA	2.25	3.94	7.38	1.44	1-1/2	3/4	7/8	8.20
2200WA	2.50	6.37	11.75	1.88	2	3/4	1-1/8	11.38
2250WA	3.00	6.31	12.50	2.31	2-1/2	1	1-3/8	13.20

